

CHICKLIT WINTER 2020

Christmas Edition



Hello and welcome to another edition of Chicklit!

I had a massive burst of submissions coming in this time, and there are a few Christmas-themed items. I hope you enjoy it, and merry Christmas :)

Thank you to everyone who sent in submissions!

-Theo Monaghan, editor

- Cover art by Fallon Ewart



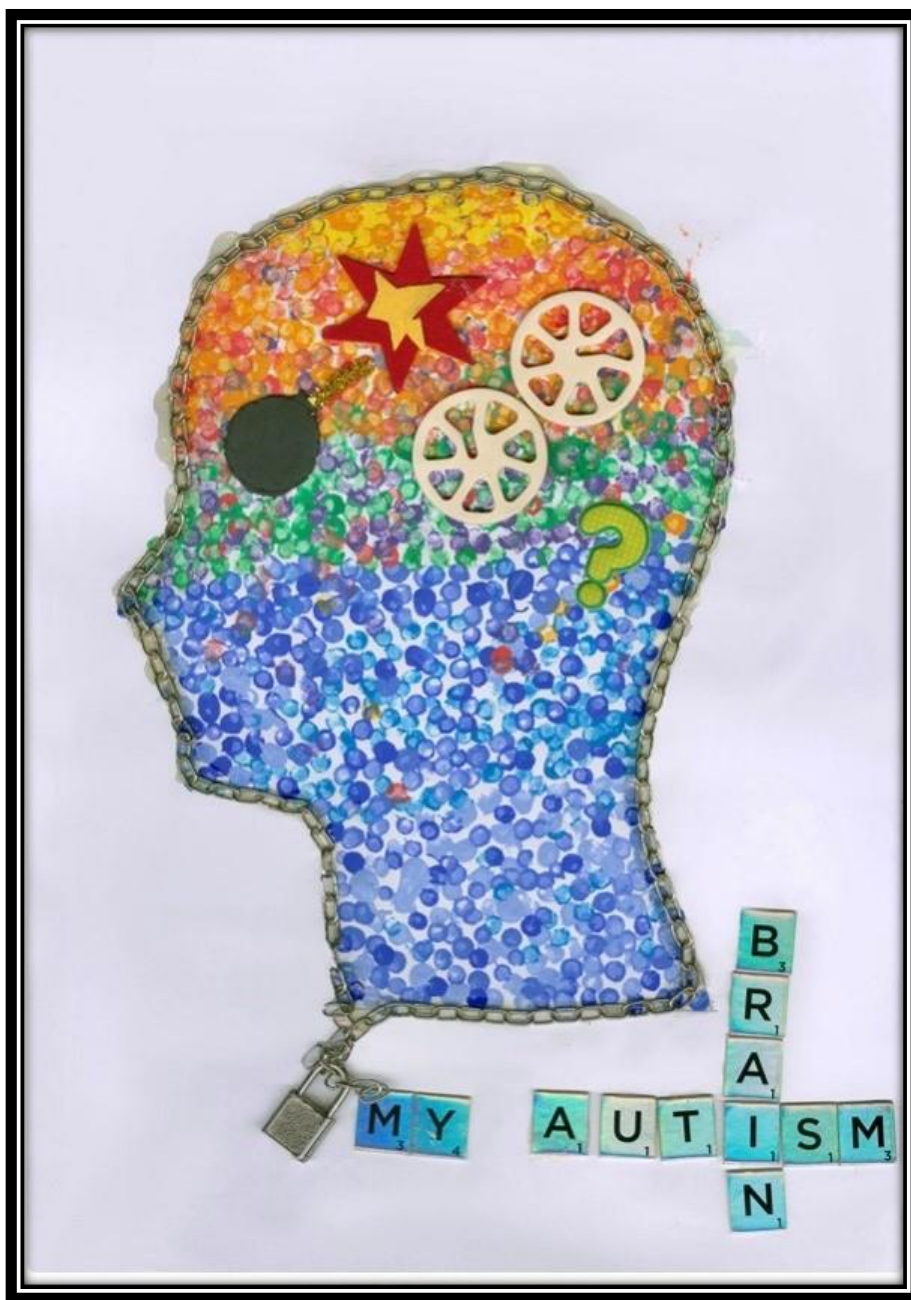
- by Sadhbh Warren



- by Zen Rice



- by Amihan Navarro, age 11



- "My Autism Brain" (merit award in Texaco Art Competition)
By Richie Lennon

"Dad", by Tomás (age 12)

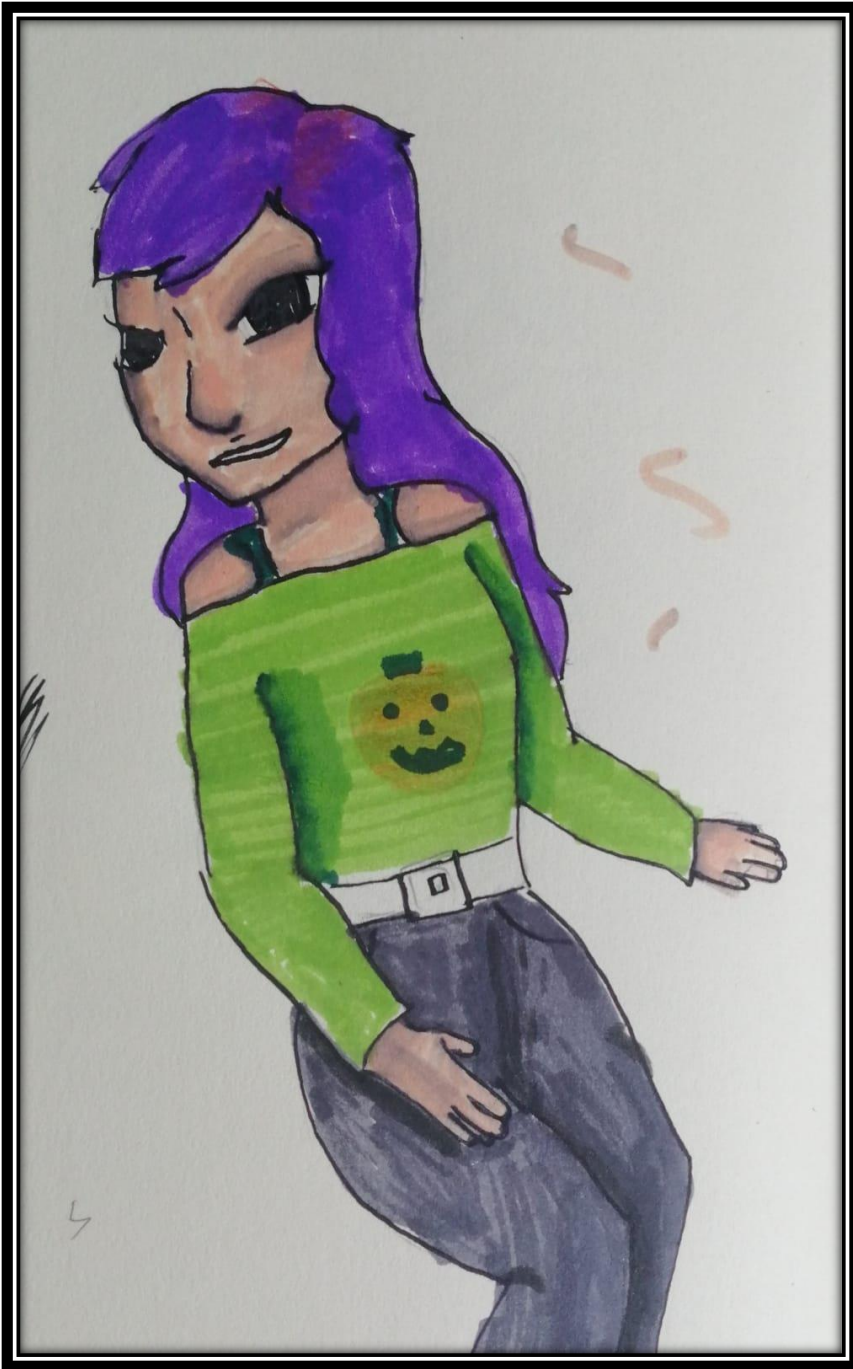
Oh Seamus, Oh Dad, I would write a poem 'bout you but you are so boring and bland, I mentally can't, you did all the typical actions of your generation, "got it on vinyl" Started a band (deformed a band) got a band back together

But your boring goes beyond just your generation, you college boy, you haven't changed your style of dressing in 35 years.

Oh Seamus, Oh dad, I would finish a poem 'bout you but you are so boring and bland, I mentally can't.



- "Ninetales" by Richie Lennon



-by Mary Sue, age 10

SUBNAUTICA



"SUBNAUTICA" is a horror/survival game. The plot is that a spaceship lands on an alien planet, and you are the only survivor. You have to survive by catching alien fish. Some of the Fauna are dangerous for the player, such as the snake-like reaper leviathan or the fire breathing sea dragon. You can craft high-tech weapons and tools to help you survive. The graphics are great and most of the glitches in the early version have been fixed. Over all really good game and I would recommend it to fans of Minecraft or No Mans Sky



- "Subnautica" review by Matthew Williams

I love LEGO so one day I made a modification to my LEGO truck so that it would look like an army truck like a mine shield at the front and a machine gun at the back and it has room for 2 people.

-Noah, age 9



A Body on a Mountain's Side
By Ted Date

I see you blackened and dead.

A corpse in the wind.

Utterly lifeless, only the smallest hints of colour remain. Skin long since blackened by cold and rain. Yet you do not appear to absorb the waters, Rather it lies on you.

No creatures of summer will come to you now, none will sit or graze.

You are too far gone,

Like leather, there is little left to chew,

Your body may still fill a stomach,

Yet grass would do that just as well as you. You are stiff to it all, past dying in truth.

A body on a mountain's side.

And yet in Summer you will come alive.

You will play host to greens, reds and blues. Now you sit as dripping wood

Soon to rise with flowers

The bark of your skin will remain.

Absorbed in green, for you will blossom.

A body on a mountain's side.

Hi everyone! It was my birthday a few days ago and we went to visit a castle's grounds. We found 20 or more peacocks! It was so fun but we didn't find any feathers, it was a great day anyway.

From Maximilian



Hi my name is Tadhg and I am 8. My pony is Bella. She is a welsh pony. She is pretty hard to ride and I have to take care of her a lot but once I get to ride her it is really fun if I can stay on her for the full lesson.



The Land Before, a Gacha club series made by Grace Little



Grace's YouTube channel is called Bluey Gacha, go check it out! :)

This is the Lego friends camping set. My favourite bit is how the floor moves. I like the Lego cars too with the bouncy wheels.

- Kara, age 5



Tips and tricks in the new game Minecraft Dungeons

In Minecraft Dungeons there are nine main maps/levels. They are creeper woods, pumpkin pastures, soggy swamp, redstone mines, cacti canyon, desert temple, fiery forge, highblock halls, and obsidian pinnacle. There are five maps/levels with bosses. Those maps/levels are listed here with their bosses. MAIN GAME ENEMY IS CALLED THE ARCH ILLAGER

Maps/levels - Bosses

Soggy swamp - Corrupted Cauldron,

Redstone mines - Redstone Monstrosity,

Desert temple - Nameless One,

Obsidian Pinnacle - (obsidian pinnacle has two bosses) the Arch Illager and the Heart of Ender,

The secret cow level - I haven't unlocked it yet.

In each map/level there is an arrow pointing to the end of the map/level, if you follow it you will get there faster but if you don't you still might find a chest or two.

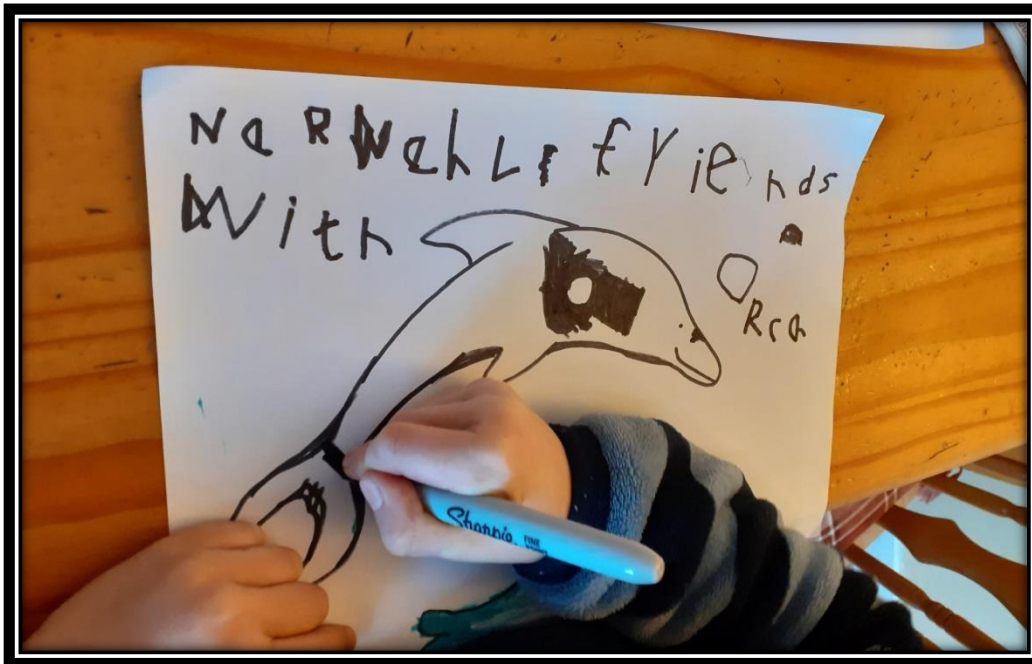
When you first choose your skin, before you go to your camp you will travel to squid coast (this is not a main level) but it is easy.

Try to find the safe spot when fighting the boss mobs. It is a place where you won't get hurt but you can still hurt the boss. eg: in Obsidian Pinnacle behind the rightmost entrance pillar.

For more info read the independent and unofficial guide Minecraft world

DONNACHA RING age 11

P.S. HAPPY CHRISTMAS



- Narwhal Friends with Orca, by Donnchadh



- Saoirse, Oscar, and Donnchadh working on a full sheep's fleece which they felted into a rug. The first stage involved picking out debris.

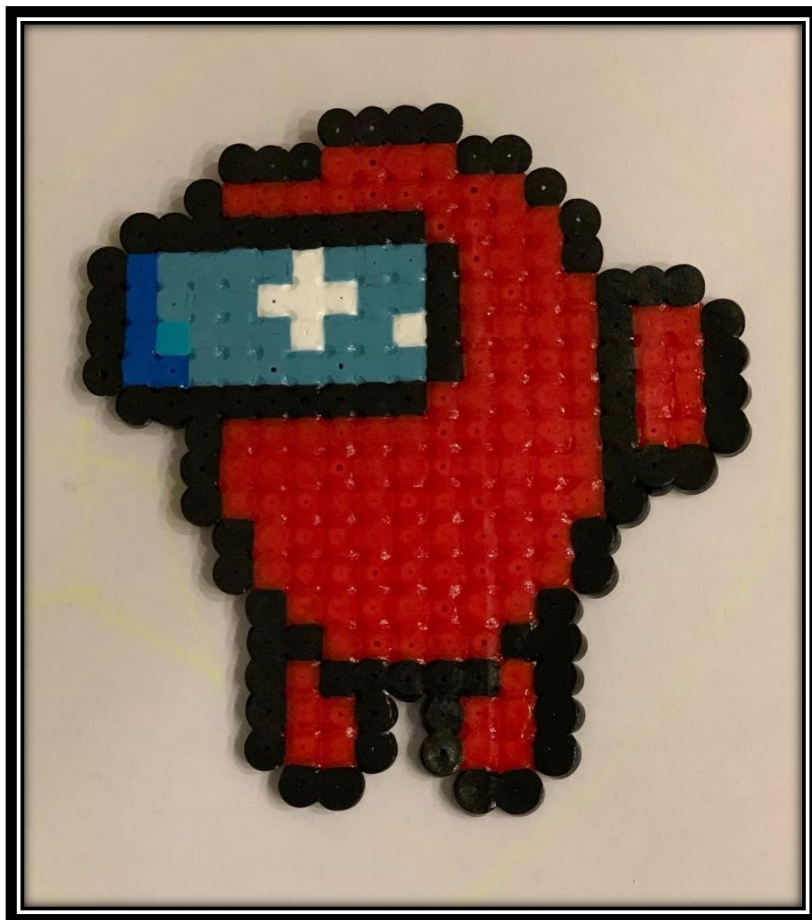
Hama Beads

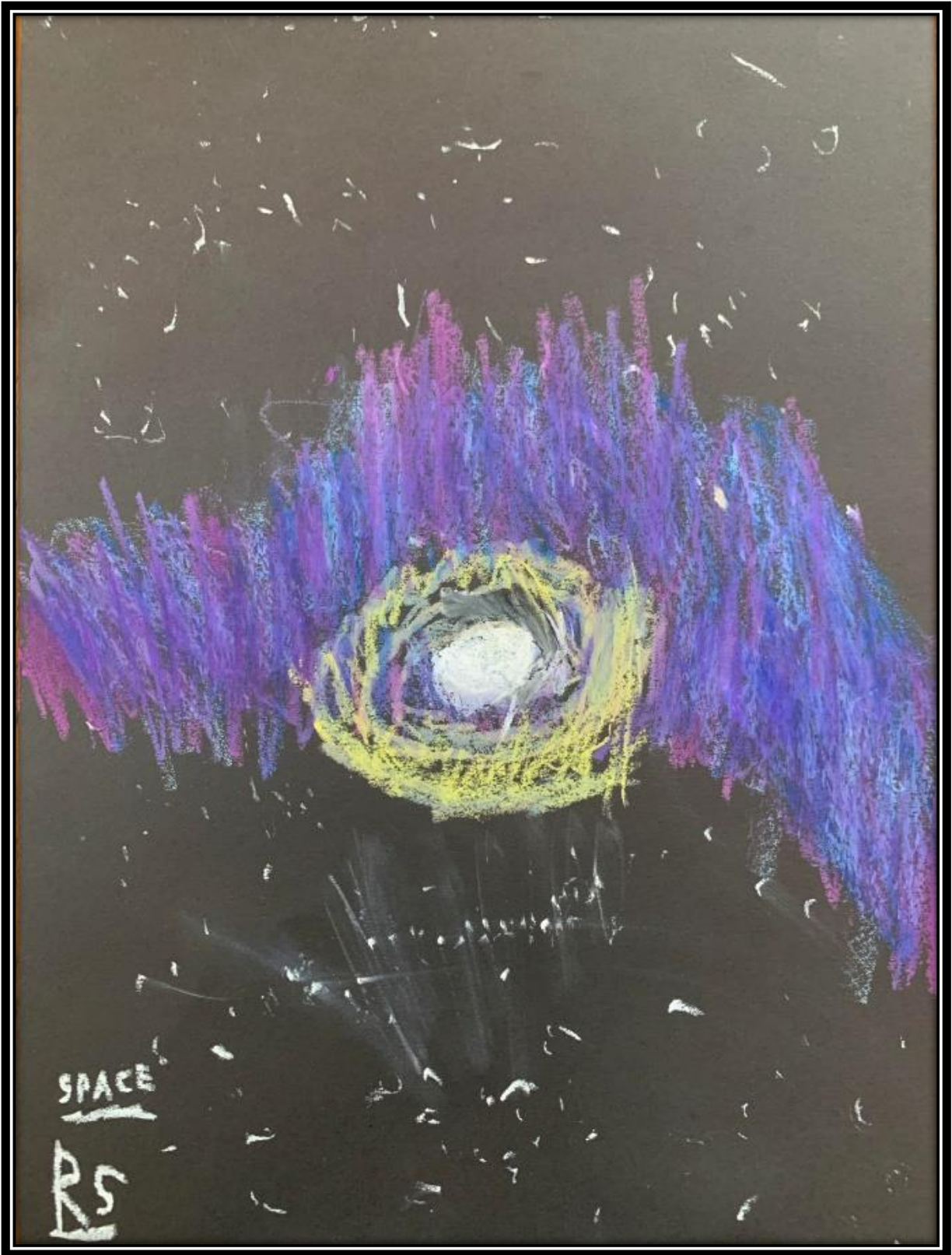
Hama Beads are a fun way to create patterns. They are hollow cylindrical beads that you put on a pegboard to make your pattern. Once you are finished making your design you can ask an adult to iron it for you. What this does, is it fuses the beads together so that your design doesn't fall apart!

Here is the website where you can discover more! www.hamabeads.com

Here's one that I've made, it is a character from the popular video game Among Us.

Reuben Spelman, age 9





- Space, by Reuben Spelman



- Moon, by Reuben Spelman

Small Study of the Imperial Japanese Navy (IJN) in WW2

By Joshua Strozer

Ships included:

Top Left: IJN Yamato (battleship)

Top Right: IJN Musashi (battleship)

Bottom Left: USS Missouri (battleship)

Bottom Right: IJN Zuikuki (aircraft carrier)

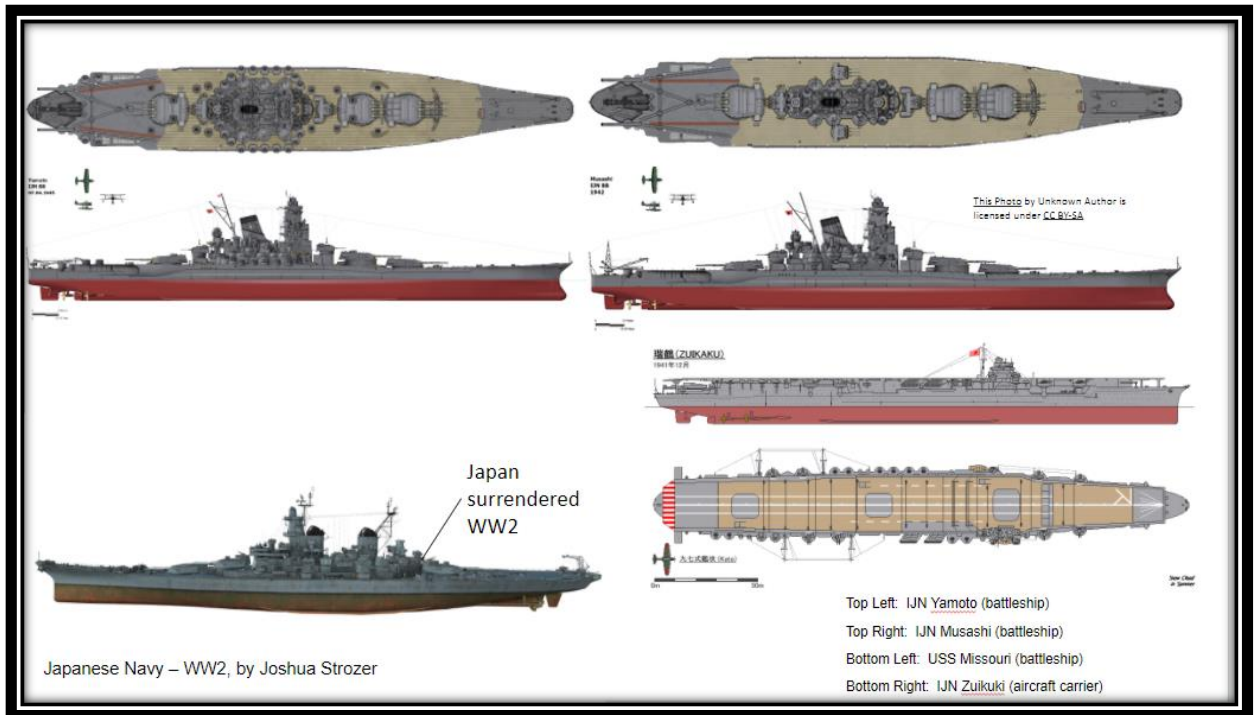
Battleships are used to fight other ships. They are pretty fast despite their size. Aircraft carriers are used to transport and launch aircraft.

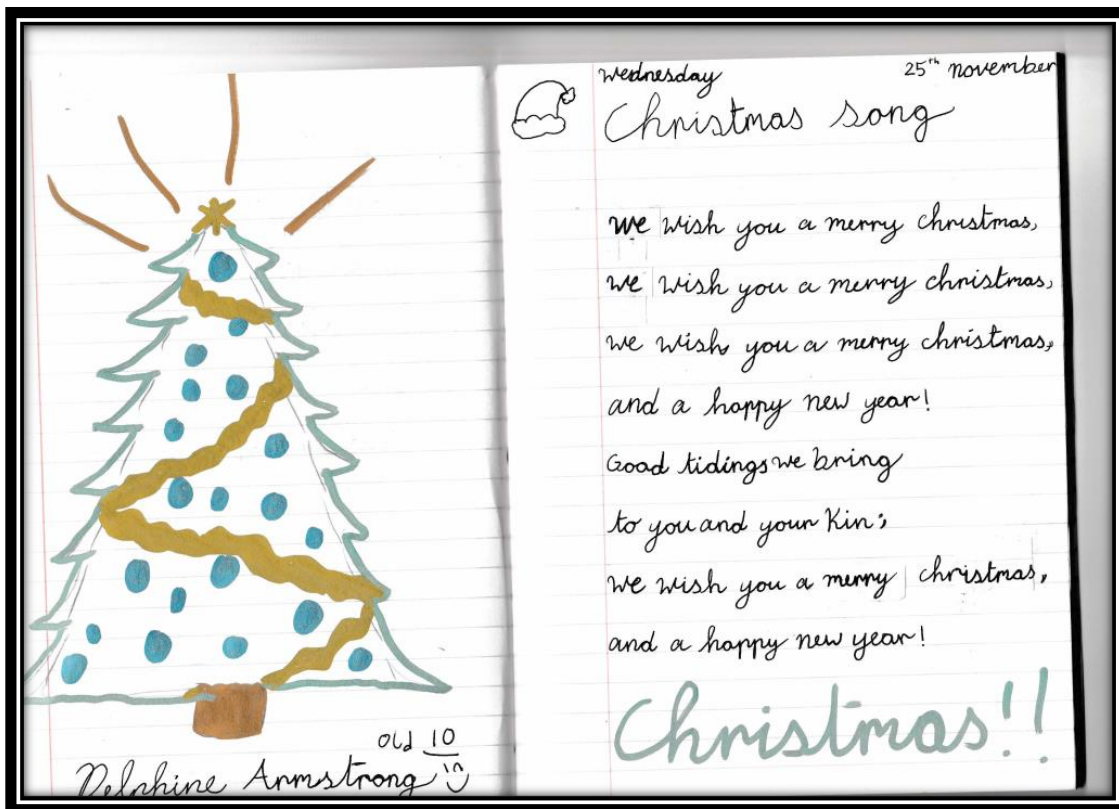
The IJN Yamato and IJN Musashi were sister ships. One of the differences between the IJN Yamato and IJN Musashi is that they do not have the same armament. IJN Musashi has two cruiser guns. IJN Yamato has secondary armament (to fight destroyers) and lots of anti-aircraft guns. The IJN Musashi was sunk first. Then, the IJN realized they needed the battleships to have more anti-aircraft guns and added them to the IJN Yamato. As a result, the IJN Yamato lasted longer in WW2.

The IJN Zuikaku was an aircraft carrier but there was a shortage of airplanes at the time, so it did not carry any. The shortage of planes was because airplanes were reserved for kamikaze attacks. Since those planes never returned, a shortage occurred.

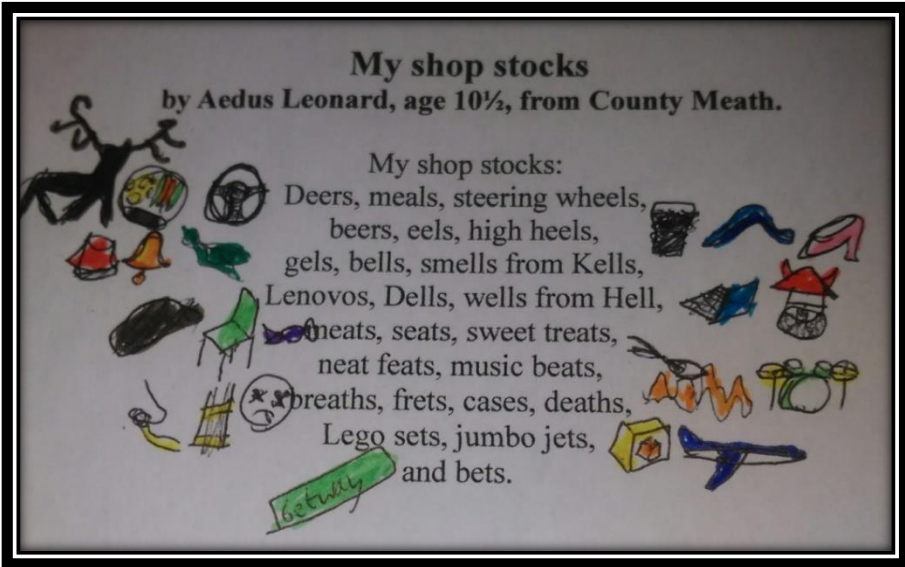
The USS Missouri was built in 1944 so it was not at Pearl Harbour during the attack in 1941. The curve on the bottom of the USS Missouri is made of strong metal and deflects torpedoes. The USS Missouri was in Pearl Harbour and was the location for where the Japanese surrendered from WW2. I think the US decided the Japanese should surrender where the Japanese involvement

started. It likely made the Japanese feel pretty bad.





By Delphine Armstrong



- Poetry by
Aedus
Leonard,
age 10



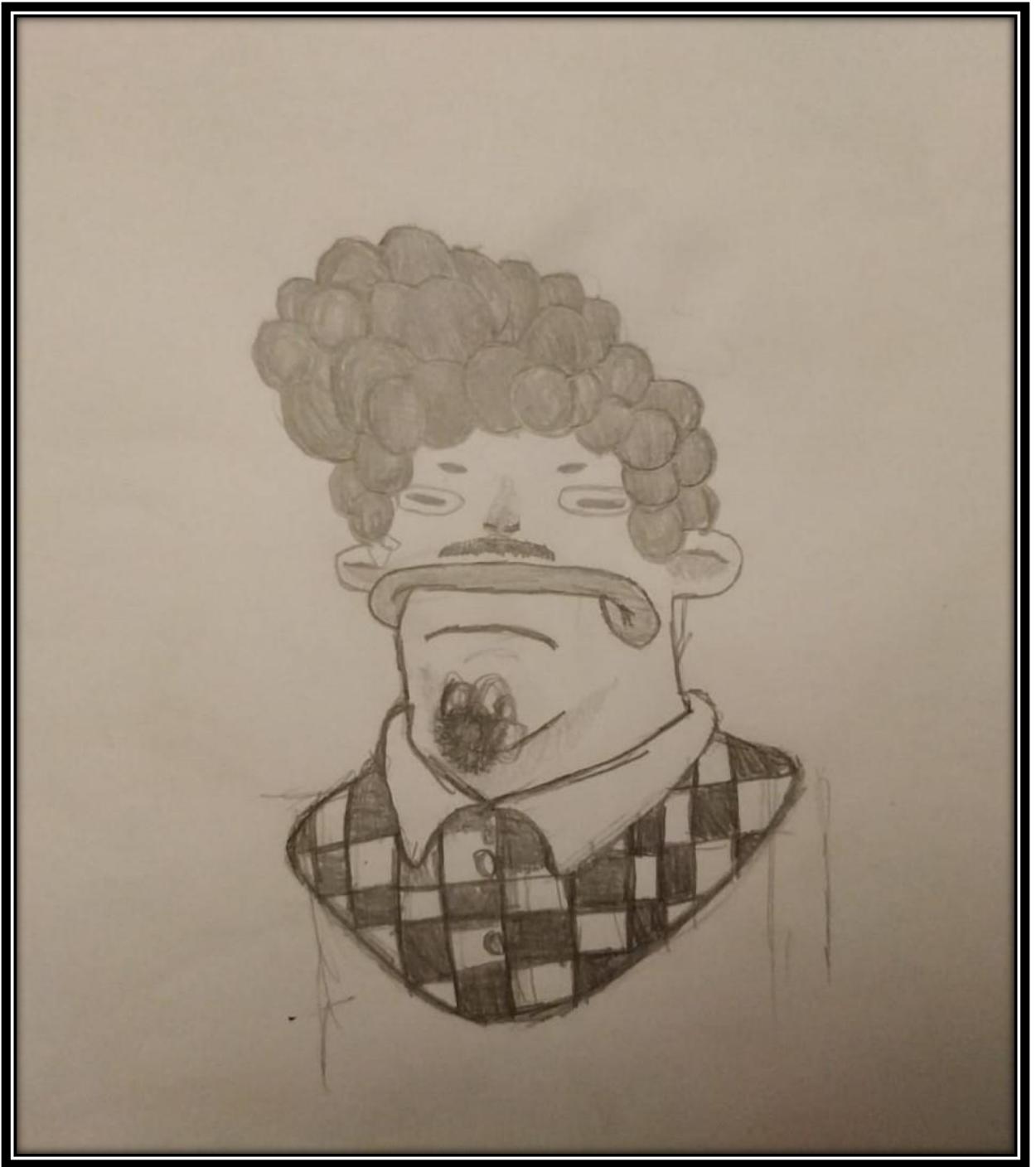
- by Zen Rice



- Ice Cream, by Delphine (age 10)



- Siomha (age 8) and Cecily Leonard (age 6) with some autumn art.



- by Zohar Cohen-Brener



- back cover art by Darian Byrne